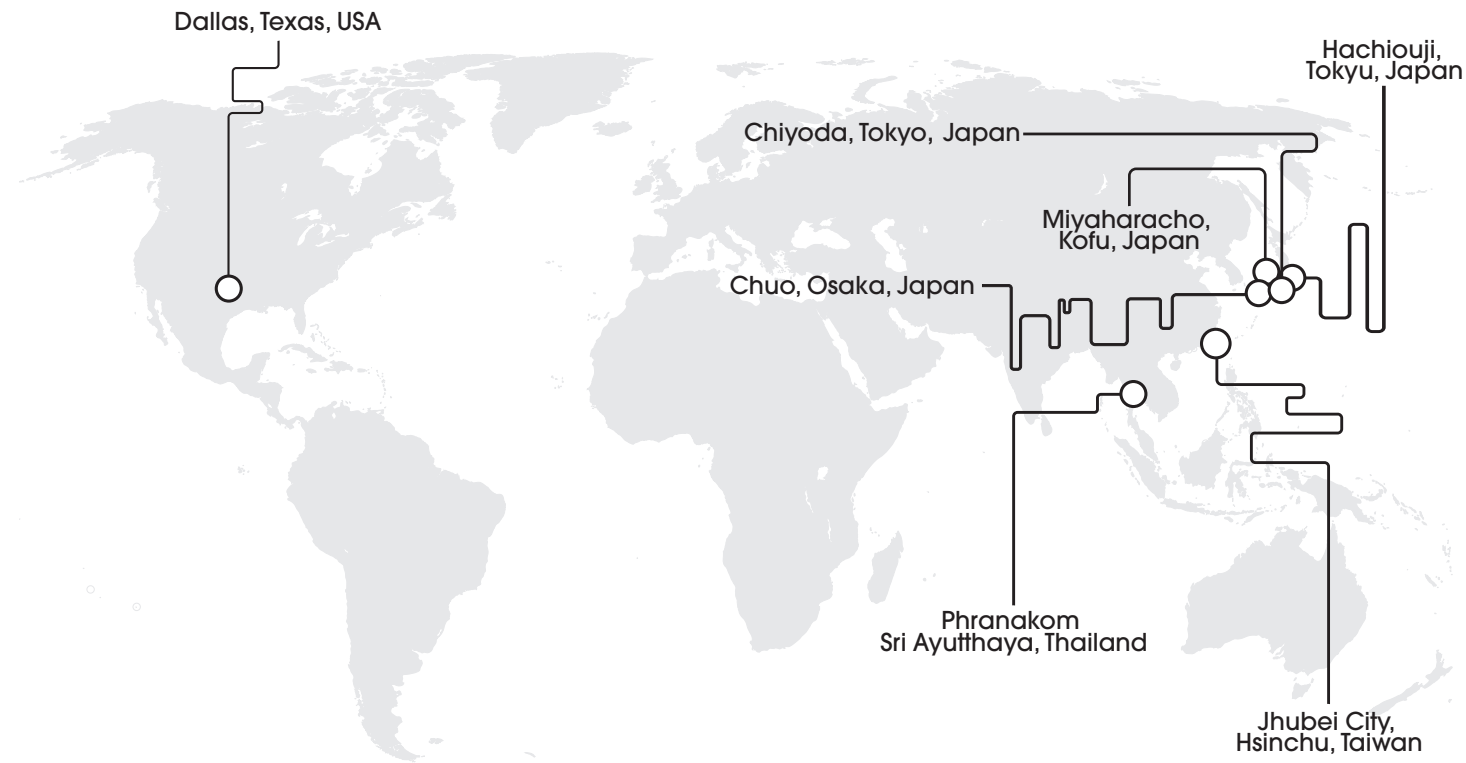


Sanwa Worldwide



Since 1947, Sanwa has grown to become a leading worldwide manufacturer of passive components for the telecommunication, data communication, and other industries.

- The Sanwa Product Line -

- LC SERIES
- SC SERIES
- MU SERIES
- FC SERIES
- FIBER-TO-THE-ROOM SERIES
- MPO SERIES



MPO Connector Series

MPO Connectors Supported by Sanwa Service



MPO Connector Series

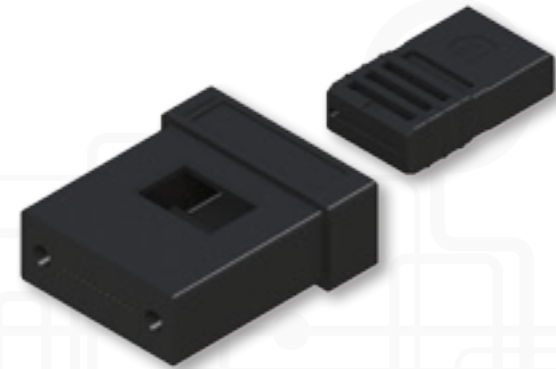
The Sanwa MPO Connector Series adds the latest in MPO technology to our broad line of passive fiber optic components. Whether you need ferrules only, or an entire assembly in a 12-port model (24 and 48 port models coming soon), you can count on the quality and reliability of Sanwa MPO components.

Sanwa manufactures all MPO components in-house. Sanwa's advanced manufacturing systems incorporate the latest in injection molding technology, along with full state-of-the-art assembly and test procedures. With Sanwa, you can count on reliable delivery, and the highest level of product quality. In addition, because there are no other manufacturers involved in the Sanwa MPO system, custom requirements can be more readily met.

MT Ferrules

Features

- Standard and High-Grade SM, MM are available
- 12-fiber type (24-and 48-fiber types available 2016)
- Compliant to IEC and TIA standards
- RoHS and REACH compliance
- Flammability Rating: UL 94 V-0



Mode and grade; Insertion Loss and Return Loss Data

- SS; IL = 0.75dB or less (Typical; 0.25dB) RL = 60dB or more
- SH; IL = 0.35dB or less (Typical; 0.1dB) RL = 60dB or more
- MS; IL = 0.60dB or less (Typical; 0.2dB) RL = 20dB or more
- MH; IL = 0.35dB or less (Typical 0.1dB) RL = 20dB or more

Ordering Information:

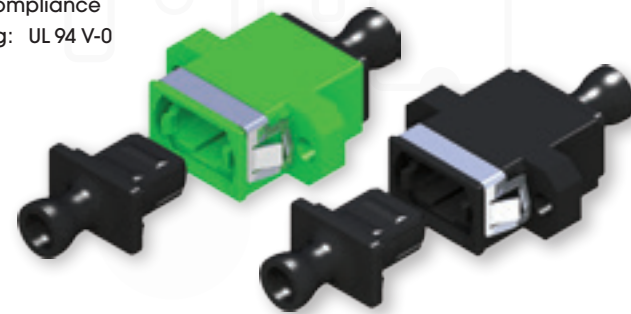
Series	No. of Fiber Hole	Mode and Grade	Boot
MT	12	SS Single mode Standard	Y w/ Boot
	24*	SH Single mode High Grade	N w/o Boot
	48*	MS Multimode Standard	
		MH Multimode High Grade	

*24 and 48 fiber type will become available in 2016.

MPO Adapters

Features

- Standard screw-mount and short flange (for high-density applications) types available
- Availability of both cross key adapters (in full range of colors) and straight key adapters (in light gray)
- Compliant to IEC and TIA standards
- RoHS and REACH compliance
- Flammability Rating: UL 94 V-0



Ordering Information:

Series	Housing Type	Housing Color	Metal Plate
MPO	AD1 Long Flange	GR Green	Blank w/ Plate
	AD2 Short Flange	YE Yellow	NP w/o Plate
		BE Beige	
		BK Black	
		AQ Aqua	
		VI Violet	

Series	Housing Type	Housing Color	Metal Plate
MPO	AD1 Long Flange	LG Light Gray	Blank w/ Plate
	AD2 Short Flange		NP w/o Plate

MPO Connector Kits

Features

- Standard and High-Grade SM, MM are available
- Male and female type connectors
- Full selection of boot types
- Compliant to IEC and TIA standards
- RoHS and REACH compliance
- Flammability Rating: UL 94 V-0



Mode and grade; Insertion Loss and Return Loss Data

- SS; IL = 0.75dB or less (Typical; 0.25dB) RL = 60dB or more
- SH; IL = 0.35dB or less (Typical; 0.1dB) RL = 60dB or more
- MS; IL = 0.60dB or less (Typical; 0.2dB) RL = 20dB or more
- MH; IL = 0.35dB or less (Typical 0.1dB) RL = 20dB or more

Guide pin specification (OD / applicable mode)

- Class G1; 0.6985 +/- 0.0001 mm / Mode; SH
- Class G3; 0.6985 +/- 0.0005 mm / Mode; SS and MH
- Class G4; 0.698 +/- 0.001 mm / Mode; MS

Ordering Information:

Series	Housing Type	No. of Fiber	Mode and Grade	Housing Color	Boot Type
MPO	PM Male	12	SS Single mode Standard	GR Green	TN No boot
	PF Female	24*	SH Single mode High Grade	YE Yellow	T1 Ribbon fiber (12 fbr or less)
		48*	MS Multimode Standard	BE Beige	T2* Ribon fiber (24 fbr)
			MH Multimode High Grade	BK Black	T3* Ribbon fiber (48 fbr)
				AQ Aqua	F1 Oval Jacket ribbon cable
				VI Violet	R20 2.0mm Round cable
					R30 3.0mm Round cable
					R40 4.0mm Round cable
					R50 5.0mm Round cable

*24 and 48 fiber type will become available in 2016.

MPO Assemblies

Because Sanwa manufactures each component of an MPO connection, we can also meet your need for off-the-shelf or custom MPO assemblies. Contact Sanwa sales for more details.

